



BUSINESS/CIVIC
LEADERSHIP
FORUM

Fall 2023

SPONSORED BY





Welcome

Table of Contents

<u>Welcome & Contents</u>	<u>2</u>
<u>Fall 2023 Leadership Forum Class</u>	<u>3</u>
<u>Welcome Reception</u>	<u>4</u>
<u>Session 1: Galveston</u>	<u>5-6</u>
<u>Dinner, Introductions & Shrub Kempner</u>	<u>5</u>
<u>Russell Richard: History Map</u>	<u>6</u>
<u>Session 2: Galveston</u>	<u>7-17</u>
<u>Speed Networking</u>	<u>7</u>
<u>Excursion Group 1</u>	<u>8-9</u>
<u>Excursion Group 2</u>	<u>10-11</u>
<u>Excursion Group 3</u>	<u>12-13</u>
<u>Excursion Group 4</u>	<u>14-15</u>
<u>Excursion Group 5</u>	<u>16-17</u>
<u>Session 3: Addressing Systemic Issues</u>	<u>18-27</u>
<u>Making Houston Greater with Bob Harvey</u>	<u>18-19</u>
<u>Urban Research with Ruth Lopez Turley</u>	<u>20-21</u>
<u>Energy Transition with Jenny Philip</u>	<u>22-23</u>
<u>Healthcare with Stephen Williams</u>	<u>24-25</u>
<u>Prophetic City with Dr. Stephen Klineberg</u>	<u>26-27</u>
<u>Session 4: DE&I & LJ Selections</u>	<u>28-29</u>
<u>Diversity, Equity & Inclusion with Larry Payne</u>	<u>28</u>
<u>Graduate Panel & Learning Journey Selection</u>	<u>29</u>
<u>Session 5: Happy/Social Hour</u>	<u>30</u>
<u>Immigration with Stan Marek & Linda Lorelle</u>	<u>30</u>
<u>Session 6: Dr. Education with Dr. Melanie Johnson</u>	<u>31-32</u>
<u>Session 6 & 7: Learning Journey Presentations</u>	<u>33-42</u>
<u>Education</u>	<u>33-34</u>
<u>Housing</u>	<u>35-36</u>
<u>Crime</u>	<u>37-38</u>
<u>Energy</u>	<u>39-40</u>
<u>Healthcare</u>	<u>41-42</u>
<u>Session 7: Forum Wrap Up & Graduation</u>	<u>43-47</u>
<u>Silver Eagle Overview with John Johnson</u>	<u>43-44</u>
<u>What's Next: Graduate Engagement</u>	<u>45</u>
<u>Graduation</u>	<u>46</u>
<u>CHF Fall Forum Class of 2023</u>	<u>47</u>





CLASS of Fall 2023



Monique Allen
Memorial Hermann Health System

LaGina Harris
The Us Space

Carson Nunnelly
Hines

Dr. Sarah Remmert
Shell

Patricia Borjas
Port of Houston

Katie Lamb
New Hope Housing

Ashleigh Nwanguma
King & Spaulding

Craig Rhodes
Greater Houston Partnership

Andrew Cook
H-E-B

Free Lane
Greater Houston Partnership

Melissa Orta
Silver Eagle

Steve Rodriguez
Silver Eagle

Melissa Craig
Deloitte

Stacey Lastovica
New Hope Housing

Dr. Talia Pennington-Dorsey
Incarnate Word Academy

John Senneff
Marek Bros

Leia Engle
Memorial Hermann Health System

Leron Lee
Comcast

John Pickett
RSM US LLP

Parker White
The NRP Group

Ezreal Garcia
Community Health Network

Carrie Marr
Drax

Manisha Rathod
NRG Reliant



CHF STAFF
Brett Perlman, President & CEO
Russell Richard, SVP, Leadership Initiatives, Alumni Engagement, & Community Outreach

FACILITATION TEAM – JDGAdvisors
Joni D. Goodman, CPTD, CDTLF
Patricia Selmo, PMP, ACC
Sharon Nasr – Virtual Producer

Welcome Reception

We first met on August 31, 2023 for a Welcome Reception for the Fall 2023 Leadership Forum at the Center for Houston's Future offices. Russell Richard, SVP of Leadership Initiatives, Alumni Engagement, & Community Outreach, welcomed the class and thanked everyone for their participation. Brett Perlman, President & CEO, informed us about the great work of the Center.





Galveston – Session 1

On Thursday September 7, we kicked off the forum at the Tremont House in Galveston, with dinner, introductions, and a visit from BOI, CHF alumni and former board member, Shrub Kempner, who gave us a brief history of Galveston.





Understanding the Houston Region

After dinner, Russell Richard took us on a journey through the Galveston/Houston Region's development from the bold and improbable founding of Houston by the Allen brothers in 1836 to the current day as the fourth largest and most culturally diverse metropolitan area in the nation. Russell, guided the discussion and together we examined the role civic leadership has played in the growth and success of the region, and noted the patterns, values and guiding principles that are in evidence throughout our history.





Galveston – Session 2 – Speed Networking

SPONSORED BY



Galveston – Session 2 Excursion Presentations



Group 1





Group 1 - Highlights





Group 2





Group 2 - Highlights





Group 3





Group 3 Highlights



Group 4





Group 4 Highlights





Group 5





Group 5 Highlights





Session 3: Making Houston Greater

Bob Harvey: President & CEO Greater Houston Partnership



Making Houston Greater



CENTER FOR HOUSTON'S FUTURE - CHF FALL FORUM 2023

GREATER HOUSTON PARTNERSHIP

- 950 BUSINESSES
- 12 COUNTIES
- 1/5 HOUSTON'S WORKFORCE

MAKING HOUSTON GREATER

ONE HOUSTON together

UPSKILL HOUSTON

BACK HOUSTON TRACK

FOUR KEY RESPONSIBILITIES

- POLICY ENVIRONMENT
- ECONOMIC DEVELOPMENT
- SKILLED & EDUCATED WORKFORCE
- QUALITY OF LIFE

SPORTS

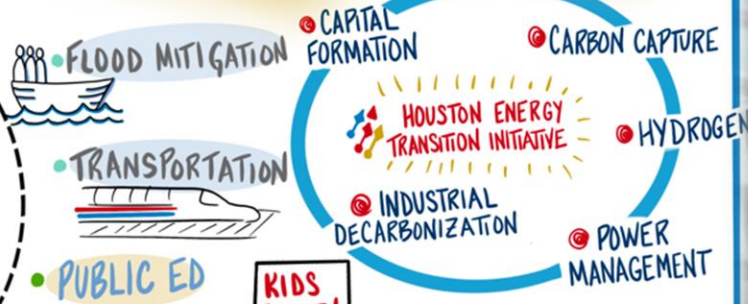
PARKS

"SUITE 8F"

CHAMPION for GROWTH & OPPORTUNITY

RESTAURANTS

ARTS



PATRICIA SELMO wisdom weaver

GREATER HOUSTON PARTNERSHIP

www.PatriciaSelmo.com





Session 3: Addressing Systemic Issues

Urban Research
Ruth Lopez Turley



Urban Research: Ruth Lopez Turley

SPONSORED BY



KINDER INSTITUTE for URBAN RESEARCH

CENTER for HOUSTON'S FUTURE

RESEARCH AREAS

- ★ HOUSTON POPULATION (SURVEYS)
- ★ HOUSING & NEIGHBORHOODS
- ★ HERC
- ★ ECONOMIC MOBILITY
- ★ COMMUNITY HEALTH

HOUSTON EDUCATION RESEARCH CONSORTIUM

HAND-PICKED RESEARCH PANEL

ACADEMIC RESEARCH IS REMOVED from its USERS

AWARENESS vs ACTION

PUBLICLY AVAILABLE RESEARCH

WE DO THESE SURVEYS WITH the EXPECTATION of ACTION!

COST of HOUSING

5x AVG earning

INEQUALITIES

72% SUPPORT



FUNDING SOURCES

- ENDOWMENT
- CORPORATE DONATIONS
- FOUNDATIONS (including KINDER)

GUN CONTROL

SUPPORT for GUN CONTROL

TOP CONCERNS

ECONOMY



IMMIGRANTS

1 in 4 FOREIGN-BORN

SUPPORT for IMMIGRANTS

HOUSTON is the... **MOST DIVERSE**

LEAST INCLUSIVE ...CITY



CHF FALL FORUM 2023

RUTH LOPEZ TURLEY, PHD

www.PatriciaSelmo.com





Energy Transition Jenny Philip



Energy Transition: Jenny Philip



CENTER FOR HOUSTON'S FUTURE - CHF FALL FORUM 2023



CO₂

WHAT DOES LOW CARBON MEAN for HOUSTON'S FUTURE?

"OLD ENERGY"

WHAT DOES it LOOK LIKE to YOU?



ARE WE WHERE YOU THOUGHT WE'D BE?

WE'VE PIVOTED

NOW WE NEED to GO FASTER

ENERGY TRANSITION

BIG SHIFT of an ENERGY SYSTEM

HOW DO WE REACH CLIMATE GOALS?

INDIVIDUAL ACTION

ACTION!

35% of PROJECTS are in ENERGY TRANSITIONS

LET'S HAVE a CONVO!

HOUSTON has a LEADERSHIP ROLE



JENNY PHILIP

PATRICIA SELMO
wisdom wrangler

www.PatriciaSelmo.com





Healthcare Stephen Williams



Healthcare: Stephen Williams



CENTER FOR HOUSTON'S FUTURE - CHF FALL FORUM 2023

PREVENT ILLNESS & INJURY
PROMOTE HEALTH & WELLNESS
PROTECT THE COMMUNITY

1 ADMINISTRATIVE SERVICES
UNDERFUNDED for SIZE of CITY




"WHEN YOU'VE SEEN ONE HEALTH DEPT, YOU'VE SEEN ONE HEALTH DEPARTMENT."

PUBLIC HEALTHCARE

- FOCUS on POPULATION
- DISEASE PREVENTION

2 ENVIRONMENTAL HEALTH
TESTING, INSPECTIONS, AMBULANCE CERTS

WASTEWATER TESTING



3 DISEASE PREVENTION & CONTROL & SAFETY NET SERVICES
COVID VULNERABILITY INDEX



5 MULTI-SERVICE CENTERS
CHILDREN, SENIORS, ETC





7 CHRONIC DISEASE EDUCATION
HEALTHED & WELLNESS



4 RE-ENTRY & YOUTH VIOLENCE PREVENTION

- MY BROTHER'S KEEPER
- CRNP (RE-ENTRY)

6 FAMILY HEALTH & HUMAN SERVICES

- NALOXONE for OVERDOSES
- FAMILY PLANNING
- DENTAL





www.PatriciaSelmo.com

PATRICIA SELMO
wisdom wrangler

Prophetic City: Houston on the Cusp of a Changing America

Dr. Stephen Klineberg



Prophetic City: Houston of the Cusp of a Changing America

Dr. Stephen Klineberg



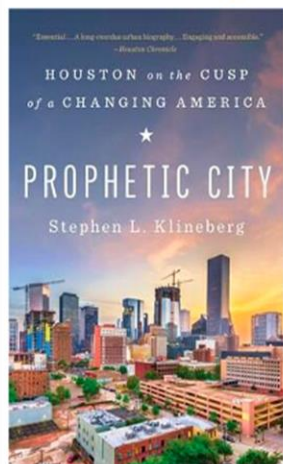
PROPHETIC CITY: HOUSTON on the CUSP of a CHANGING AMERICA

CENTER FOR HOUSTON'S FUTURE
FALL FORUM - 2023

1982
LEAST AMOUNT of CONTROLS
WORST ECONOMIC SITUATION SINCE WWII
GOVERNMENT REGULATION PLANNING KICKS ANYTHING
100K JOBS GONE by 1983
ANTI-~~EVERYTHING~~ (BUSINESS TOWN)

QUALITY of LIFE
BAYOU BEAUTIFICATION

KNOWLEDGE ECONOMY
EDUCATION IS ESSENTIAL
GLOBALIZATION
NEED MORE MONEY!
PRE-K EDUCATION is KEY



DEMOGRAPHIC REVOLUTION

NO CITY HAS BENEFITTED MORE from IMMIGRATION than HOUSTON!

FASTEST GROWING DEMOGRAPHIC is OVER 80

EVERY LANGUAGE of BUSINESS SPOKEN ANYWHERE in the WORLD is SPOKEN in HOUSTON by NATIVE SPEAKERS with GLOBAL CONNECTIONS
- Annise Parker

WE COME FROM EVERYWHERE



Stephen Klineberg



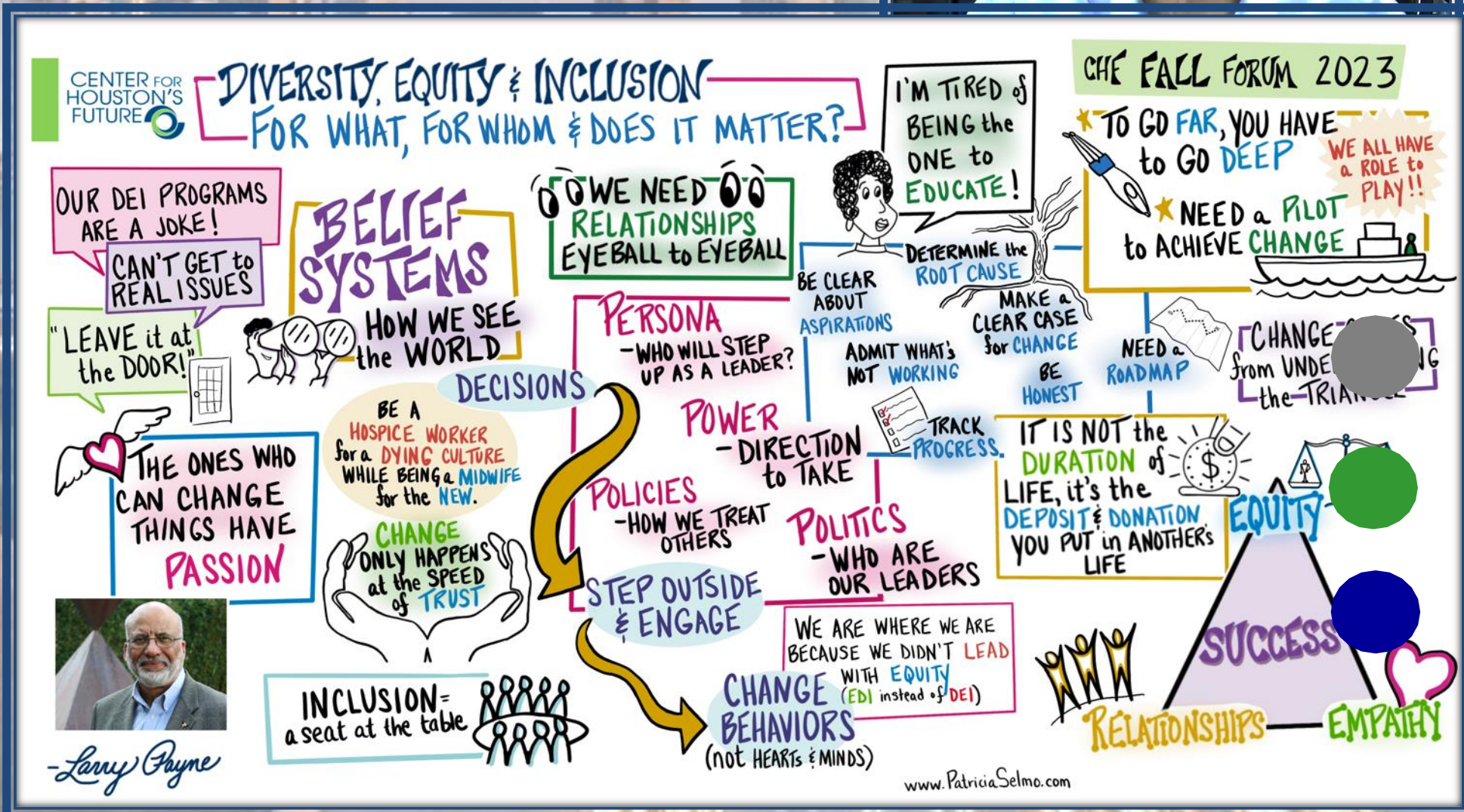
Image by www.PatriciaSelmo.com





Session 4

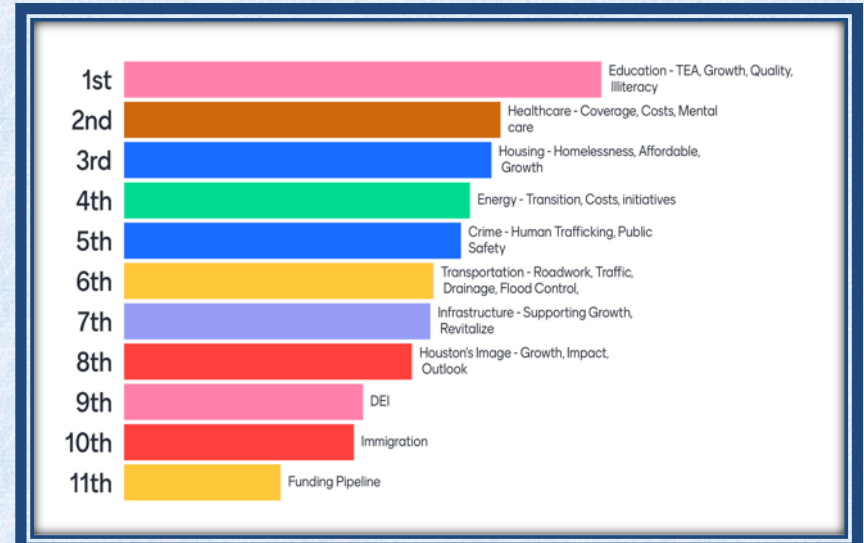
Diversity, Equity & Inclusion Larry Payne



-Larry Payne

Graduate Panel & Learning Journey's

Making The Most Of Your Forum Experience



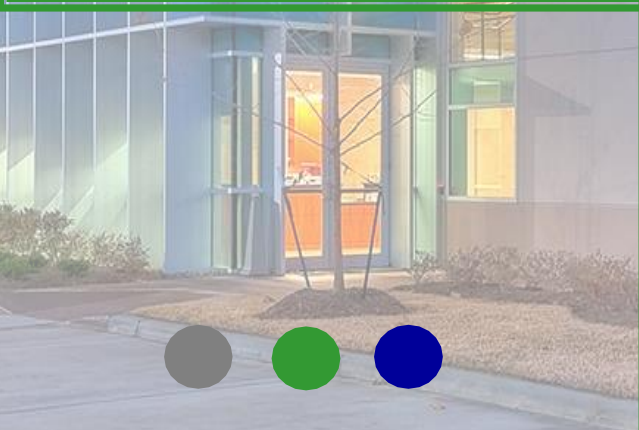
Learning Journey Voting

Education		Healthcare		Housing		Energy		Crime	
Katie	Carson	Melissa C	Steve	Leia	Melissa O	Monique	Carrie	Parker	Craig
Stacey		Ezreal	Talia			Free	John P	Patricia	
		LaGina				Sarah	John S		
						Manisha	Ashleigh		



Session 5: Happy Hour

Hosted at The Marek Brothers head office with guest speakers Stan Marek and Linda Lorelle discussing the topic of immigration in Houston.



Session 6: Early Childhood Education

Dr. Melanie Johnson

SPONSORED BY



Early Childhood Education

Dr. Melanie Johnson

CENTER FOR
HOUSTON'S
FUTURE



EARLY CHILDHOOD EDUCATION

BARRIERS



PRE-K SYSTEMS

AL vs TX

MATH
HISTORY

✓ **LOCUS of CONTROL**

✓ **CURRICULUM**

✓ **TEACHER CREDENTIALS**

✓ **SYSTEMS SUPPORT**

PARENTS
- ACCESS/AFFORDABILITY -

TEACHERS
- UNDERPAID -

CHILDCARE
BIZ OWNERS
QUALITY = ↑ COSTS

• UNTRAINED
TEACHERS

• ADVERSE-CHILDHOOD
EXPERIENCE (ACE)

• ADULT-CENTERED

• NO EVIDENCE
of GROWTH

• HIGH
PUPIL:TEACHER

• BABYSITTING

★ **CHILD-CENTERED**

★ **LEARNING WHILE PLAYING**

★ **INTENTIONAL COACHING**

QUALITY CHILDCARE

★ **INQUIRY-DRIVEN**

★ **EVIDENCE-BASED**

★ **SOCIAL-EMOTIONAL LEARNING & EXECUTIVE FUNCTION (RELATIONSHIPS)**

NOT...

IMPROVE COLLABORATIVE READINESS for CHILDREN

INCREASE ACCESS

-THEORY of CHANGE-

BIG DATA HUB



BUSINESS DEVELOPMENT TRAINING

TEACHER DEVELOPMENT TRAINING



FAMILY EMPOWERMENT

CENTERS of EXCELLENCE

1+1=2
2+2=?



- ★ 37% at 3rd GRADE READING LEVELS
- ★ 109th OUT OF 182 LARGE CITIES
- ★ 44% KINDERGARTEN-READY
- ★ 2x INCREASE in SUBSIDY PROVIDERS
- ★ 1% LOW-INCOME ACCESS to HIGHEST QUALITY CARE

CHF FALL FORUM 2023



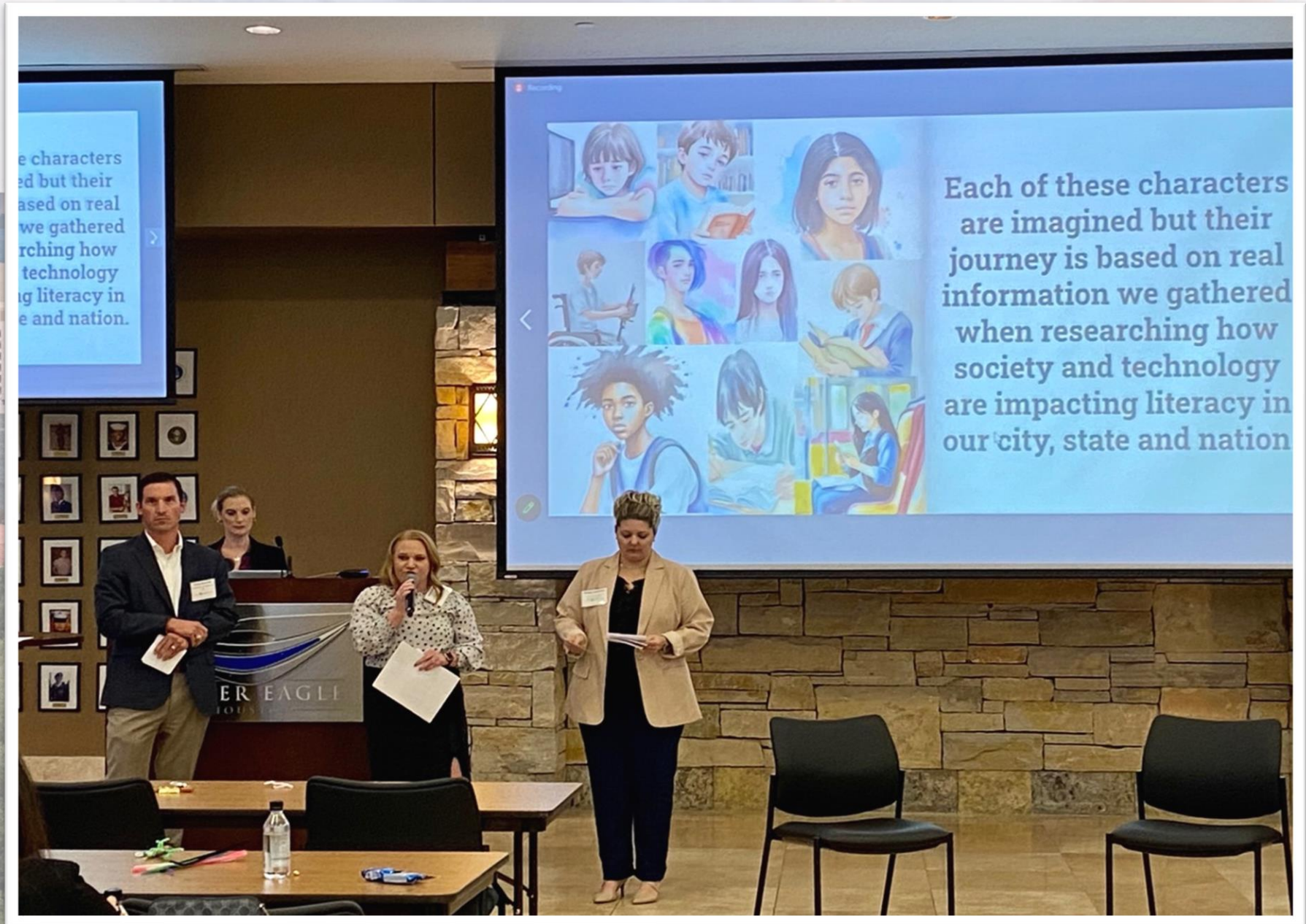
DR. MELANIE JOHNSON

www.PatriciaSelmo.com



Learning Journey Presentations

Education



Education

SPONSORED BY



CENTER FOR HOUSTON'S FUTURE

LEARNING JOURNEY - EDUCATION

HOLA! **DUAL-LANGUAGE**
IMMIGRANT HELLO!



ACCESS to LIBRARIES

PUBLIC TRANSPORTATION



TIME with TEACHERS



POVERTY

GENDER IDENTITY

MONEY for BOOKS



CRIME

LITERACY IMPACTS
by SOCIETY



LGBTQ+ CENSORING

READING is for GIRLS!



RACE

GENDER DIVERSITY



LEARNING DISABILITIES



IMPACT by SOCIETY & TECH
HIGH-PERFORMANCE

BLACK KIDS
3x MORE LIKELY
to STRUGGLE
with READING



IMPACT by TECHNOLOGY
PHYSICAL DISABILITIES
INTELLECTUAL DISABILITIES

www.PatriciaSelmo.com

CHF FALL FORUM 2023



Housing



Housing

SPONSORED BY



CENTER FOR HOUSTON'S FUTURE

CHF FALL FORUM 2023

HOUSING COSTS

★ RENTERS PAY **30%** of INCOME versus

★ OWNERS PAY **23%**



HISPANICS-LARGEST HOMEBUYERS GROWING

HOUSING INSTABILITY DECREASES MENTAL HEALTH



DROP in HOUSING PURCHASES

AFFORDABILITY GAP INCREASED 41% (2021-22)

HISPANICS/BLACKS → HIGHER INTEREST RATES & MORE DENIALS

LEARNING JOURNEY HOUSING

CHILDCARE or HEALTHCARE GET SACRIFICED



AFFORDABLE HOUSING INFORMATION

- 58% HOUSEHOLDS RENT (HOUSTON)
- 45% HOUSEHOLDS RENT (HARRIS COUNTY)
- 30% ↑ MEDIAN GROSS RENT



The NEXT DISASTER will MOSTLY AFFECT LOWER INCOME

65% RENTALS PRONE to DISASTERS



AMERICAN DREAM

- ★ HARD WORK
- ★ SUCCESS
- ★ OPPORTUNITY

NOW INCLUDES EDUCATION



OBSTACLES to HOME OWNERSHIP

- DOWN PAYMENT
- COST-BURDEN

(income vs. affordability)



EVICCTIONS GREW

Black/Brown 68-75% COST-BURDEN

MORE #1s in LOW-INCOME HIGH-RENT

HIGH INCOME LOW RENT

www.PatriciaSelmo.com



Crime

SPONSORED BY



Crime

CENTER FOR HOUSTON'S FUTURE

LEARNING JOURNEY - HUMAN TRAFFICKING

WHY HOUSTON

- ★ LARGE SEX INDUSTRY (with high-heeled shoe icon)
- ★ UNDERGROUND (with tunnel icon)
- ★ FREQUENCY of EVENTS & CONVENTIONS (with calendar icon)
- ★ AIRPORT, SEAPORT & ROADWAYS (with ship icon)
- ★ PROXIMITY to MEXICO (with Mexican flag icon)
- ★ FASTEST-GROWING ORGANIZED CRIME (in a yellow oval)

HOW to HELP

- AWARENESS
- RECOGNIZE the SIGNS (with clipboard icon)
- REPORT

INITIATIVES

- ANTI-TRAFFICKING ORDINANCES (with scroll icon)
- RIDESHARE TRAINING (with van icon)
- OPERATION BROKEN HEART (with broken heart icon)
- DEMAND SUPPRESSION (with HPD VICE shield icon)
- 300K VICTIMS in TX (in a blue oval)
- 25 MILLION WORLDWIDE (in a blue oval)

CHILDREN at RISK (with children icon)

CETEC

- RESEARCH & ADVOCACY (with magnifying glass icon)
- UNDERSTAND ROOT CAUSE (with document icon)
- CHILD-FOCUSED
- PASSED LEGISLATION (with gavel icon)

THE LANDING

- FAITH-BASED
- DROP-IN CENTER
- YOUTH ADVOCACY (with woman holding sign icon)
- OUTREACH (with raised hands icon)

★ \$150 BILLION/YR in US (in a green oval)

BEST PRACTICES

- CROSS-AGENCY (with handshake icon)
- PARTNERSHIP for FREEDOM
- EMERGENCY PATROLS at AIRPORT
- EDUCATION CAMPAIGNS
- DISPLAY PROMINENT INFORMATION (with sign icon: SIGNS of HUMAN TRAFFICKING Call: 555-5555)
- CLEAR VICTIM CRIMINAL RECORDS
- RESPONSE TEAM (with police officers icon)

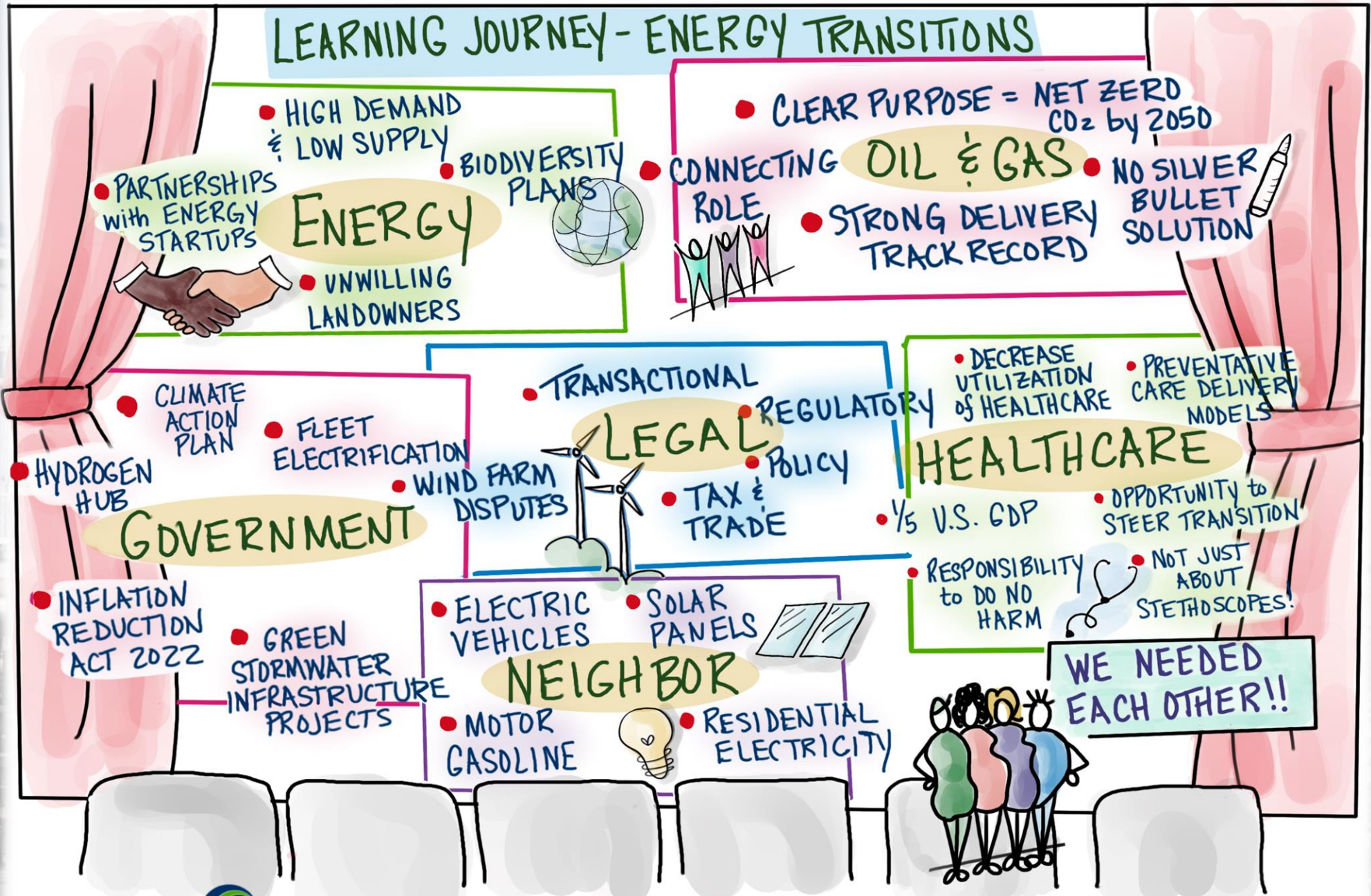


Energy Transition



Energy Transition

SPONSORED BY





Healthcare

SPONSORED BY

SILVER EAGLE
HOUSTON



Healthcare

CENTER FOR HOUSTON'S FUTURE

LEARNING JOURNEY - HEALTHCARE

BASED ON TRUE STORIES...

PRIMARY CARE PROVIDERS SEE 10 PATIENTS PER HOUR



EMPTY NEST
(ESPERANZA)

LONELINESS

- OBESITY
- MANIC DEPRESSION
- NON-ENGLISH SPEAKER
- WORKS NIGHTS
- TRUCK-DRIVER HUSBAND
- ISOLATION



ACCESS

HEALTH CARE DISPARITIES

UNFAIR AVOIDABLE DIFFERENCES in CARE

MAIN ISSUES:

- * **INSURANCE**
- * **ACCESSIBILITY**
- * **EQUITY**
(incl. WEIGHT & GENDER)

90% > CHANCE of DYING

CHALLENGES

- * **MENTAL HEALTH SUPPORT**
- * **RESOURCES**
- GETTING THEM to PEOPLE

THE EXPERIENCE of HOUSTON'S HEALTHCARE SYSTEM

59% (1.3mm) < 6 YRS. OLD BOTH PARENTS WORK

< 10% ELIGIBLE for SUBSIDIES

MAJORITY of TX CHILDREN (59%)

62% (1.7mm) 6-12 YRS OLD SINGLE FAMILY



BEARING BURDENS
(Serena)

- \$7-9000/YR CHILDCARE
 - POST-PARTUM DEPRESSION
 - > 6 FIGURE INCOME
 - BLACK MOM w/ 2 KIDS
 - NOT ELIGIBLE for SUBSIDIES
 - BLOOD CLOT in LUNGS!
-



Session 7: John Johnson Silver Eagle



John Johnson Silver Eagle



JOHN JOHNSON

SILVER EAGLE
HOUSTON

TOP 10 BRANDS

* DURING COVID SALES

• 8% ON PREMISE
(Bars, Restaurants, etc.)

• 14% PRIOR to COVID

* SWITCHING from
VODKA to SELTZER

EXCLUSIVE RIGHTS

SERVICE 3
COUNTIES

* HARRIS

* FORT BEND

* MONTGOMERY

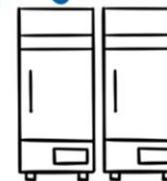
• RESTAURANTS
• BARS
• STORES



* 180 TRUCKS
DELIVER DAILY



80% of COLD BOX



in STORES!!



CENTER FOR HOUSTON'S FUTURE

Image by: www.PatriciaSelmo.com





CHF FALL FORUM 2023

What's Next: Graduate Engagement

Engaging with the Center

To complement all we had learned during the learning journey presentations, we learned more about the Center for Houston's Future initiatives as we prepared to plan and discover our continued civic involvement post forum.

What's Next After The Leadership Forum

Leadership Committee	Alumni Engagement Committee	Community Outreach & Engagement Committee	Other
To broaden the Center's reach and recruitment for the Leadership Forums and other potential leadership initiatives through developing relationships with corporations, civic/community organizations, associates, and foundations.	To bring together Leadership Forum alumni and support their ongoing efforts to drive lasting civic change that makes Houston a better place.	To raise the profile of the Center within the greater Houston community through targeted engagement.	We anticipate there will be several other opportunities to stay engaged with the Center and future forums. Please consider signing up to stay informed of these future opportunities as they arise.
			

Expanding the Network of Community Leaders

Three individuals are seated on a stage in front of the screen, engaged in a panel discussion. The man on the left is speaking into a microphone. The man in the middle is listening. The woman on the right is also listening.



Graduation





Congratulations CHF Fall Class of 2023





JDGAdvisors
P.O. Box 22891
Houston, TX 77227
832-305-6747
ioni@jonidgoodman.com
www.jdgadvisors.com